

OMRON

FH-L550
FH-L550-10

Image Processing System

INSTRUCTION SHEET

Thank you for selecting OMRON product. This sheet primarily describes precautions required in installing and operating the product.

Before operating the product, read the sheet thoroughly to acquire sufficient knowledge of the product. For your convenience, keep the sheet at your disposal.

TRACEABILITY INFORMATION:
Importer in EU: Omron Europe B.V.
Manufacturer: Omron Corporation

The following notice applies only to products that carry the CE mark:
Notice: This is a class A product. In residential areas it may cause radio interference...

© OMRON Corporation 2016 All Rights Reserved.

Meanings of Signal Words

Symbols and the meanings for safety precautions described in this manual.

In order for the product to be used safely, the following indications are used in this book to draw your attention to the cautions. The cautions with the indications describe the important contents for safety.

WARNING: Indicates a potentially hazardous situation which, if not avoided, will result in minor or moderate injury, or may result in serious injury or death.

CAUTION: Indicates a potentially hazardous situation which, if not avoided, may result in minor or moderate injury or in property damage.

Meanings of Alert Symbols

The following alert symbols are used in this manual.

Table with 2 columns: Symbol and Description. Includes symbols for General Prohibition, General Caution, Electrical Hazard, Explosion Hazard, Laser Radiation Hazard, and High Temperature Caution.

Alert statements in this Manual

The following alert statements apply to the products in this manual. Each alert statement also appears at the locations needed in this manual to attract your attention.

Multiple alert statements with symbols: WARNING (This product must be used according to the instruction manual), CAUTION (Do not touch the terminals while the power supply is ON), and WARNING (Please take external safety measures).

CAUTION: Danger of burns. Do not touch the case while the LED is ON or just after power is turned OFF, since it remains extremely hot.

Precautions for Safe Use

- Condition of the fitness of OMRON products
Please do not use this product to directly or indirectly use to detect the human body...
Applications with stringent safety requirements, including but not limited to nuclear power control equipment...

*1 In addition to the applications listed from (a) to (d) above, Omron products (see definition) are not intended for use in vehicles designed human transport...

*2 The above is part of the Terms and Conditions Agreement. Please use carefully read the contents of the guarantee and disclaimers described in our latest version of the catalog...

- Installation Environment
Do not use the product in areas where flammable or explosive gases are present.
Clean the ventilation holes and fan outlet regularly to prevent dust and particles from clogging them...

- Ground
The power supply circuit of the FH-L series Sensor Controller is not insulated from the internal circuit.
When the connected camera to FH-L series Sensor Control comes packaged with a base, make sure to mount with the base...

Relevant Manuals

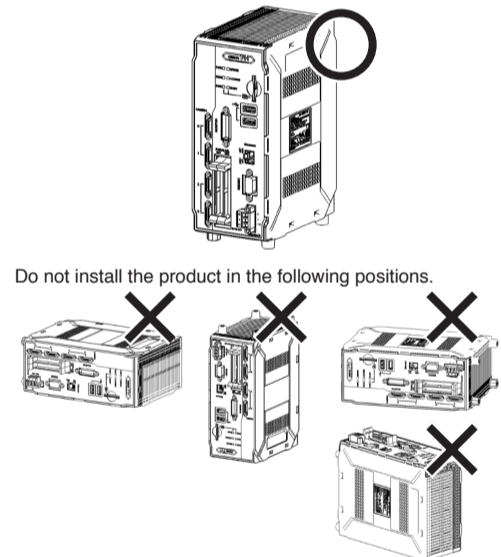
Refer to other related manuals.

Table with 3 columns: Manual Name, Man. No., Model numbers. Lists manuals for Vision System FH/FZ5 Series and Macro Customize Functions Programming Manual.

- Please insert monitor connector perpendicularly so that the connector resin part and pin are not rubbing against each other.
Always turn OFF the power of the FH-L series Sensor Controller and peripheral devices before connecting...

Precautions for Correct Use

- Installation and Storage Sites
Install and store the product in a location that meets the following conditions:
Surrounding temperature of 0 to 55°C (-25 to +70°C in storage)



- Ambient Temperature
For good ventilation, provide a clearance of 50 mm or more above the sensor controller away from other devices in the normal floor mounting.
Do not install the product immediately above significant heat sources...

- Do not insert an SD card in the reverse orientation, at an angle, or in a twisting manner.
For an SD memory card, the SD BUSY LED of Sensor Controller flashes while data is being read or written.
Turning OFF the Power
When a message is displayed indicating that a task is in progress, do not turn OFF the power...

- Fail-Safe Measures
When controlling stages and robots using the measurement results from the FH-L series Sensor Controller (axis movement output based on calibration and alignment measurement), always take fail-safe measures within the stage and robot systems...

Confirm the Package

First, please check to see if the package has all the necessary Sensor Controller parts.

Table listing contents for FH-L550-10 series: Sensor Controller: 1, Instruction Sheet (Japanese/English): 1, Installation Instruction Manual for FH-L series x 1, etc.

Table listing contents for FH-L550-10 series: Sensor Controller: 1, Instruction Sheet (Japanese/English): 1, Installation Instruction Manual for FH-L series x 1, etc.

Regulations for Perchlorate in California U.S.

This product contains a lithium battery that contains perchlorate, which is regulated by the California state law.
Perchlorate Material - special handling may apply. See www.dtsc.ca.gov/hazardouswaste/perchlorate

Suitability for Use

Omron Companies shall not be responsible for conformity with any standards, codes or regulations which apply to the combination of the Product in the Buyer's application or use of the Product.

NEVER USE THE PRODUCT FOR AN APPLICATION INVOLVING SERIOUS RISK TO LIFE OR PROPERTY WITHOUT ENSURING THAT THE SYSTEM AS A WHOLE HAS BEEN DESIGNED TO ADDRESS THE RISKS.

OMRON

OMRON Corporation
Industrial Automation Company
Tokyo, JAPAN
Contact: www.ia.omron.com

Regional Headquarters
OMRON EUROPE B.V.
Wegalaan 67-69,2132 JD Hoofddorp The Netherlands
Tel: (31)2356-81-300

OMRON (CHINA) CO.,LTD.
Room 2211, Bank of China Tower, 200 Yin Cheng Zhong Road, PuDong New Area, Shanghai, 200120, China
Tel: (86)21-5037-2222